



Welcome,

As we come to the close of yet another year at Cleeve, I look back with sheer amazement at how much has been packed in.

Our year started with some excellent exam results news for years 11 and 13 - the best results we have seen in our history. This success meant that our younger students could see the possibilities that could be achieved through hard work and strong support.



As the term progressed, in October we welcomed a record number of families who were considering Cleeve Park as their secondary school choice. Our Open Mornings were packed out and as a result we are now one of the most popular school choices for families within Bexley. We are now full in all year groups with children who are ready to learn, supportive families who want to work with the school and staff who want the very best for our students.

As a result of our clear, high and focused expectations both within and outside of the classroom, we are seeing students who are working independently and really trying their hardest to be the very best they can be. We know that children (and adults) do not always get things right the first time - and we can apply this to classroom learning and to behaviour. The students at Cleeve Park are understanding the impact of their actions and learning from them. We have, as ever, taken a strong stance on behaviour expectations keeping our rules around uniform and mobiles reinforced so that children are able to focus on learning.

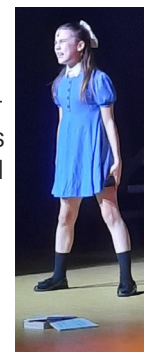


We have seen some amazing wider curricular opportunities for students this year - our musical and drama productions have been amazing, concluding last week

with a brilliant performance of "Matilda". Our Duke of Edinburgh team have led several expeditions and we continue to grow our clubs, trips and visits offer. We have seen careers conferences, university visits and field trips that support learning and enlighten the path to the future beyond Cleeve Park.

As always at the end of a year, we say goodbye to some staff who are moving on to new roles. We would like to pass our thanks and best wishes to Miss Stokes (PE), Miss Amphandang (Science), Mr Crouch (PE), Miss Sommer (Computer Science) and Miss Kallend (Maths). A special mention should go to Mrs Smith (French) who has been with us for 20 years and moves on to a school in Kent. We are in a fortunate position that we are fully staffed for next year. This is quite an achievement given the current recruitment crisis that education is facing.

We have some role changes for September 2024. Our Deputy Head, Mrs Kowalczyk has taken the difficult decision to step back from that high pressured role but I am delighted that she will remain with us as one of the best maths teachers I have ever worked with. Mrs Dixon will step up to take the role of Deputy Head. Mrs Bonner remains as Senior Deputy Head and Designated Safeguarding Lead.



From September, Mr Portsmouth will take the role of Head of School. I will remain as the Executive Headteacher of both Cleeve Park and Cleeve Meadow as I have been for the last 3 years, but he will be leading on the day to day running of our Cleeve Park community.

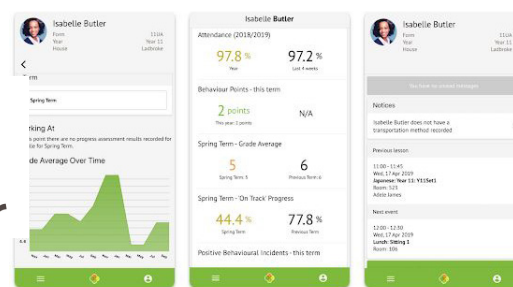
I would like to take this opportunity to thank the amazing staff that we have at Cleeve Park. Our teachers who work hard to plan engaging and challenging lessons, our pastoral staff and Teaching Assistants who support young people when they need help and guidance, and our teams of "back room" support and admin staff who without their hard work and attention to detail, our school would grind to a halt.

So, as you read our final newsletter of the year I hope you, like me, are filled with a sense of pride that you are part of our community.

Mrs O'Donnell, TKAT Executive Headteacher - Cleeve Park School & Cleeve Meadow School

Arbor Parent Portal and App

Firstly, a big thank you to those parents who have signed up to the new Arbor Parent Portal. The Portal can be accessed via a dedicated App on Apple and Android devices or via any web browser.



Once logged in you are able to view your child's timetable, monitor attendance and view student reports. It also enables you to update any contact details and see the information and consents we hold for your child.

The App also enables us to send free messages to you, instead of sending by SMS, which can help the school save money. Parents of students taking exams will also be able to see the upcoming exams timetable.

Email enquiries@cleevepark-tkat.org with any questions.



SEND Coffee Morning – 9th July



This marked our first SEND event designed to bridge the gap between parents and what goes on in the SEND Department. For the Coffee Morning we were delighted to have a guest speaker from Bexley Voice. Parents were informed about the support and events that Bexley Voice hold. Parents also had a chance to meet some of the SEND team and discussed the support that students are able to access in school. It was a fantastic opportunity for parents to share ideas future events and to use the time to offer support and advice to each other.

Mrs Viscovich, SENDCo

Primary School Master-classes

Over the summer term, primary schools from across the borough were invited to a series of weekly master-classes led by subject specialists at Cleeve Park School.



Students have taken part in subjects including Music, Drama, English, History, Food Technology and PE. The students have thoroughly enjoyed their visits and have learned lots. We are looking forward to leading more of these next academic year!

Dragons Den 'Mars Style'

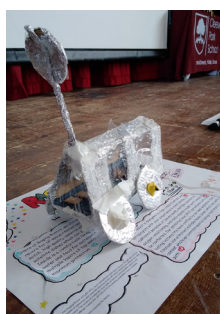
This term Year 7 has been working on how they would survive on Mars linked to the space topic covered during their lessons.



Each class has a different project question which they were focusing on, these included rockets, shelter, food, water, spacesuits and transport.

This culminated in a Dragon's Den style presentation, in which selected groups had to pitch their ideas to the Dragons and the whole of Year 7.

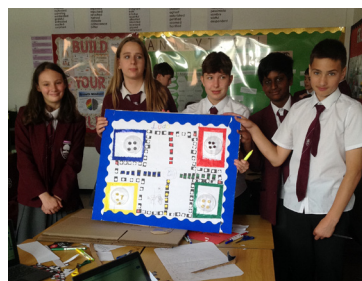
All students in Year 7 have worked extremely hard this term, creating a prototype, a script and a presentation. The Science Department are extremely proud of their commitment to their learning, and the courage to present in front of their peers.



Ms Gentry and the Science Department

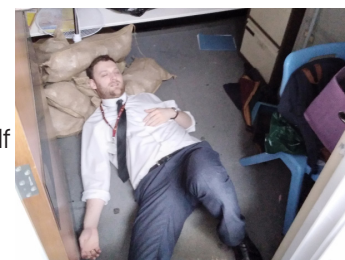
Resilience Day 2024

On Wednesday 19th June, our school community came together to build resilience. Huge thanks to families who donated materials to help our students get creative.



Year 7 students showed resilience by making board games completely out of recycled materials. Students had to work in groups to a tight time frame but managed to make some absolutely brilliant games.

Our Year 8 cohort created scripts, costumes, sets and marketing pitches for a new crime drama all in 4 and a half hours! Their presentations at the end of the day made us incredibly proud.



Year 9 students took part in a number of activities including trips to London Zoo, orienteering in Greenwich Park and a survival skill workshop. In school, students created art installations, songs, performances, poetry and news articles.

A number of students challenged themselves in a series of PE and games workshops. A particular shout out goes to our gardening team who went out of their way to improve our school environment, planting beds and making outdoor art out of recycled materials.



Every classroom had the support of Year 12 students who were excellent role models and got stuck in with the activities. It's always a privilege to see what our young people and staff can achieve together in such a short space of time.

Mrs Barnes, Resilience Day Lead

Oxford University Visit

In June a group of Year 12 students took part in a visit to Oxford University. The day started at St Peter's College before attending a Q&A with the College Master, This was followed by a tour and a fabulous hot lunch in the college hall.



In the afternoon students attended an academic taster session in Biodiversity and Nature recovery. They finished the day with a tour of the picturesque sites of Oxford.



School Production of Matilda



WOW – what a performance and another very successful school production. Thank you to everyone who came along and supported Matilda Jn and for the incredible feedback we have received. We are so proud of every student who took part in the show, whether in front of the stage or behind it and we cannot wait to see what the Cleeve Park Performing Arts Team will bring to you next.

Miss Celeb, Head of PEPA

Silver DofE Expedition - North Downs

The Silver Duke of Edinburgh's Award (DofE) team successfully completed their qualifying expedition through the picturesque North Downs. From June 21st to 23rd, 2024, the team demonstrated exceptional resilience and teamwork under challenging weather conditions.

Expedition Highlights:

Route: The team navigated the diverse terrain of the North Downs, known for its rolling hills, ancient woodlands, and stunning chalk cliffs. Covering approximately 50 kilometres over three days, they showcased their navigational and endurance skills, a testament to their thorough preparation and training.



Weather Conditions: The expedition coincided with a spell of hot weather, with temperatures soaring throughout the weekend. Despite the heatwave, which posed significant challenges such as increased risk of dehydration and fatigue, the team managed their resources wisely, took regular breaks, and stayed hydrated.

Teamwork and Skills: The participants exhibited excellent teamwork, problem-solving abilities, and an unwavering spirit. Their coordination in setting up camps, preparing meals, and navigating the trails was exemplary. They also engaged in reflective journalling and map-reading exercises, crucial for their assessment.

Team Leader Josh Wilson commented, *"The heat was intense, but our team's spirit and determination were even stronger. We supported each other through every step, ensuring we stayed on track and looked after one another. It was a challenging yet incredibly rewarding experience."*

Participant Logan McCrorie added, *"Walking through the North Downs was both beautiful and demanding. The heat made it tough, but the camaraderie and the breathtaking views kept us motivated. Completing this expedition has been a significant achievement for all of us."*

Congratulations to the Silver DofE team for their remarkable achievement under the summer sun!

Mr Southby and the DofE team

Sports Day 2024

Well, as a parent commented on Facebook *"Sports Days were not like that when I went to school, we were lucky to have an egg and spoon race!"*



This year's extravaganza grew on the success of last year and knocked it out of the park (or field). Students were split up into teams representing a selection of the countries who compete in the Olympics and wore colours to combine years 7, 8, 9 & 10.

The field was split up into 4 zones – Track (100m, 200m, 300m, 400m & Relay), Field (Javelin, Shot Putt & Standing Long Jump), Inflatables and Games (Endzone & Capture the Flag). During the day students spent an hour in each zone competing in different activities.



The sun shone, the band played, students danced and the canteen laid on a special BBQ lunch.

A high bar has indeed been set for next year!

Student Celebration Assembly

Our amazing students were gathered in the hall for our end of year celebration on Monday 22nd.

Students were recognised in categories such as Commitment, Creativity, Leadership, Performance and Teamwork.

Congratulations to all the students who won awards and a special congratulations to Gemma, Isabelle and Khiya who won awards in all 5 categories!

A huge well done to all our winners - be they quintuple award winners or winners of one category - it's a great achievement for all of you!



Mr Portsmouth, Deputy Headteacher

Key Dates

Wednesday 24th July - End of Term (11.45am)

Tuesday 3rd September - Year 7 & 12 Return

Wednesday 4th September - Whole School

Monday 16th September - School Photo Day

Saturday 21st September - Open Saturday

Half Term - 21st October to 1st November